



USER MANUAL

**Tempest 240v MB50
MK2 Cooling Fan**

**Product Code:
T5000MK2240**

Serial Number Range:

From:

To:

Year Of Manufacture:



***Please note, when ordering online via our website if the part number is not recognised,
please Email spares@hscgroupuk.co.uk or Telephone 0115 946 1988**

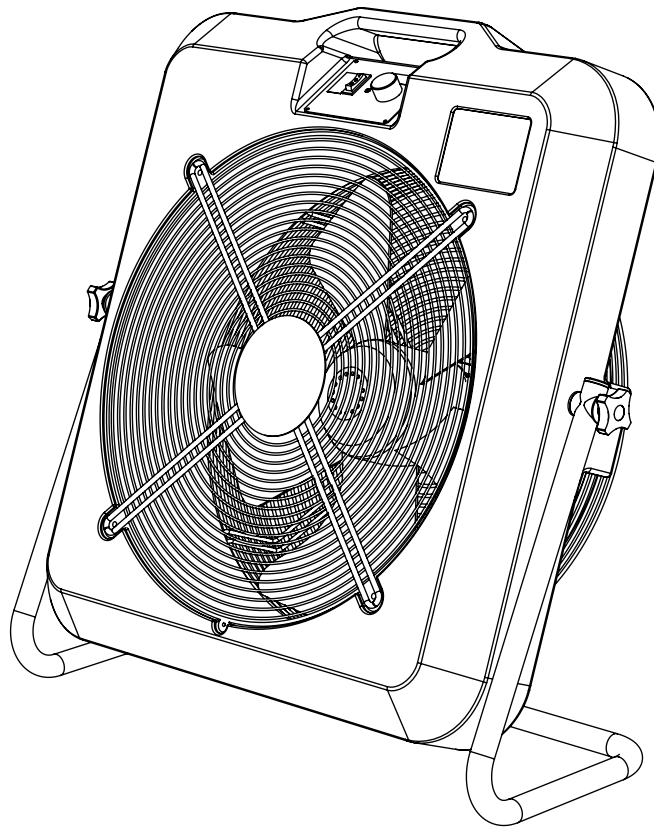
KEEP THIS BOOKLET FOR FUTURE REFERENCE

📞 Nottingham: 0115 946 1988 • London: 0208 830 3333 ✉ Nottingham: sales@hscgroupuk.co.uk • London: sean@hscgroupuk.co.uk 🌐 www.hscgroupuk.co.uk

The Hire Supply Company Terms & Conditions Apply At All Time E&OE

T5000MK2240

T5000MK2110



Product Manual

MB50

230v 13A plug - 110v 16A plug

These instructions should be read by:

**The specifying engineer.
The installation engineer.
The user.
The service engineer.**



WARNINGS



- **Failure to follow these instructions may result in risk of personal injury or damage to the equipment.**
- **Damage due to a failure to follow these instructions will invalidate the warranty.**
- **The appliance must be serviced by qualified engineers in compliance with local regulations.**
- **The appliance must be switched off and disconnected from the power supply before any work is carried out.**
- **There are no user controls inside the appliance casing.**
- **Do not cover the appliance.**
- **Do not use in the vicinity of a pool, bath or shower.**
- **An air gap of at least 300mm should be allowed at the rear of the unit to ensure a clear airflow. Do not site the unit close to soft fabrics or combustible materials. Do not obstruct the outlet grill.**
- **This is a stationary appliance and should not be moved whilst connected to the power supply.**
- **Do not disconnect the appliance from the supply under load.**
- **For internal use only. Do not use out of doors.**
- **Extension cables should be correctly rated for the load, fully unwound and never run through water or over sharp edges.**
- **This is a class 1 product and requires an Earth connection.**
- **Use of a 30mA RCD is recommended.**
- **110v Transformers must be Continuously Rated.**
- **Do not use these fans with ducting.**

TECHNICAL SPECIFICATIONS. MB FAN RANGE				
Model	MB30. 110v	MB30. 230v	MB50. 110v	MB50. 230v
Weight	9.1kg	9.1kg	14.4kg	14.4kg
IP Rating	IP2X	IP2X	IP2X	IP2X
Current	1.5A	0.60A	3.2A	1.9A
Power supply	110v. 16A. 50Hz	230v. 13A. 50Hz	110v. 16A. 50Hz	230v. 13A. 50Hz

Standards applied:

EN 60335-1:2012+A2:2019

EN 60335-2-80:A2:2009

EN 55014-1:2017

EN 55014-2:2015

EN 61000-3-2:2019

EN 61000-3-3:2008

EN 12100:2010

Product description:

The MB30/50 is a single phase industrial electric fan. It is supplied as a 230v or 110v machine.

The 230v appliance should be connected to a 13A 50Hz power supply and comes fitted with the appropriate UK power lead.

The 110v appliance should be connected to a 16A 110v 50Hz power supply and comes fitted with the appropriate power lead.

The MB30/50 comes with a high quality rotor fan motor.

The MB30/50 comes fitted with a variable fan speed controller as standard.

Setup and operation:

To start:

- Site the appliance on a firm level surface.
- Connect to the appropriate power supply.
- Please note! The control panel is situated at the front and top of the appliance.
- Set the rocker switch to I for full speed operation.
- Set the rocker switch to II for variable speed operation.
- When on setting II rotate the speed control knob to vary the speed of the fan.
- Clockwise to increase the speed. Counter clockwise to decrease the speed.

To stop:

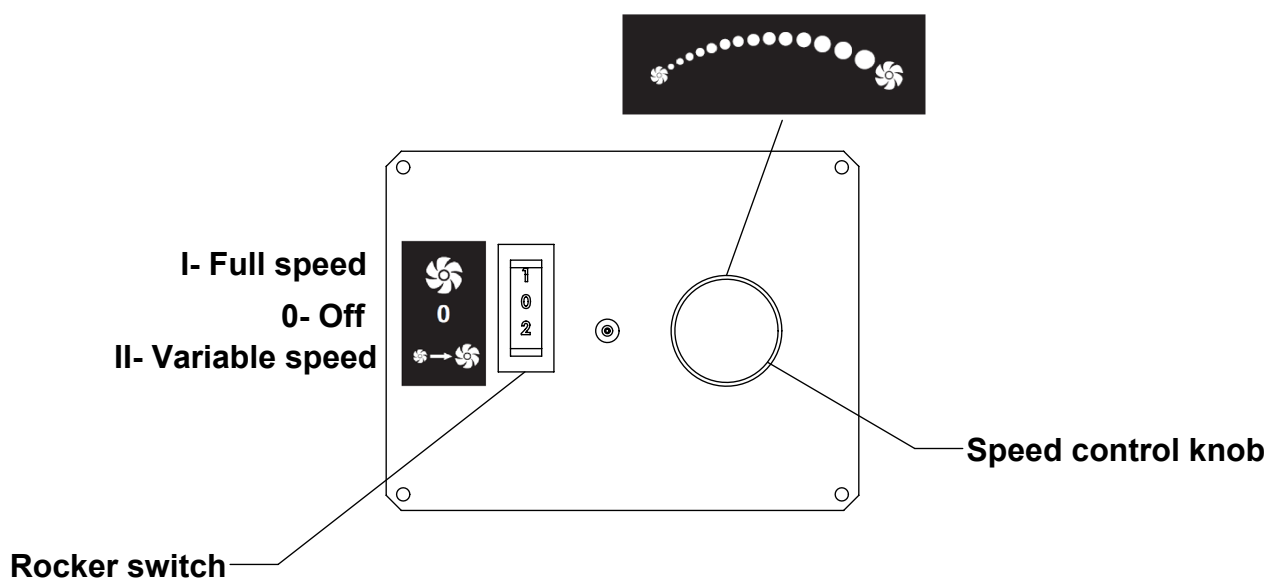
- Set the rocker switch to 0.
- Allow the fan motor to stop and disconnect from the power supply.

Do not move the appliance whilst it is operating!

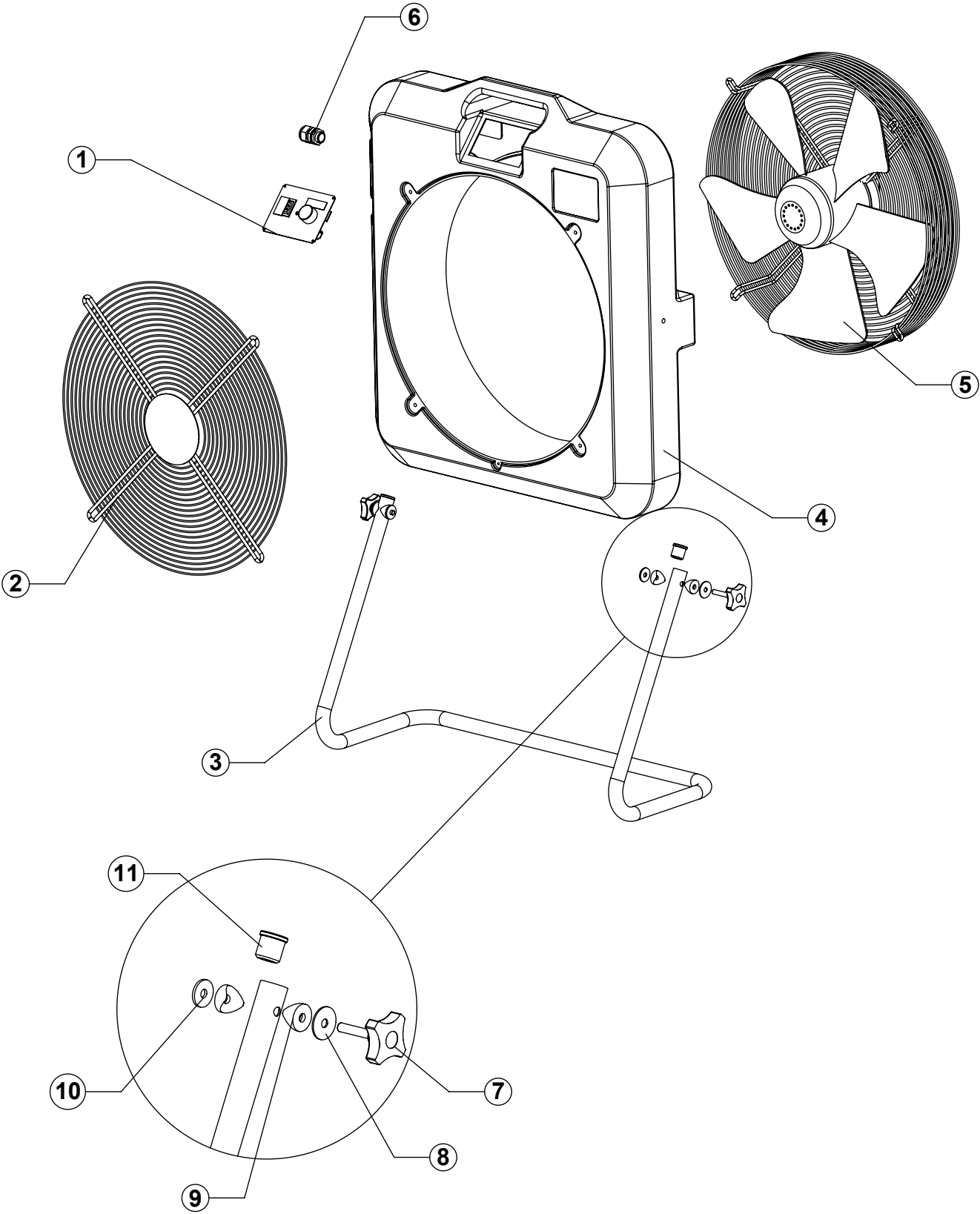
To adjust the angle of airflow:

- Loosen the hand wheels on both sides of the stand.
- Set the fan body to the desired angle.
- Tighten the hand wheels on both sides of the stand.

MB50 Control panel:



Exploded drawing:



Spare parts:

	Part description	MB50		MB30	
		110v	230v	110v	230v
1	Speed controller assembly	EL030154	EL030153	EL030154	EL030153
2	Front grill	FG50	FG50	FG30	FG30
3	Stand	TBST50	TBST50	TBST30	TBST30
4	Moulded body	PB50G	PB50G	PB30G	PB30G
5	Fan motor	FA010127	FA010128	FA010129	FA010130
6	Cable gland c/w Locknut	CG125	CG125	CG125	CG125
7	Hand wheel	HW001	HW001	HW001	HW001
8	Steel washer. M8x30	FI040402	FI040402	FI040402	FI040402
9	Saddle washer	SADWA01	SADWA01	SADWA01	SADWA01
10	Nylon washer	NYW01	NYW01	NYW01	NYW01
11	Frame bung	ME040334	ME040334	ME040335	ME040335
12	Power lead. (Not shown)	L110150	L230125	L110150	L230125

Maintenance:

Fan motors and switch gear are not customer serviceable parts.

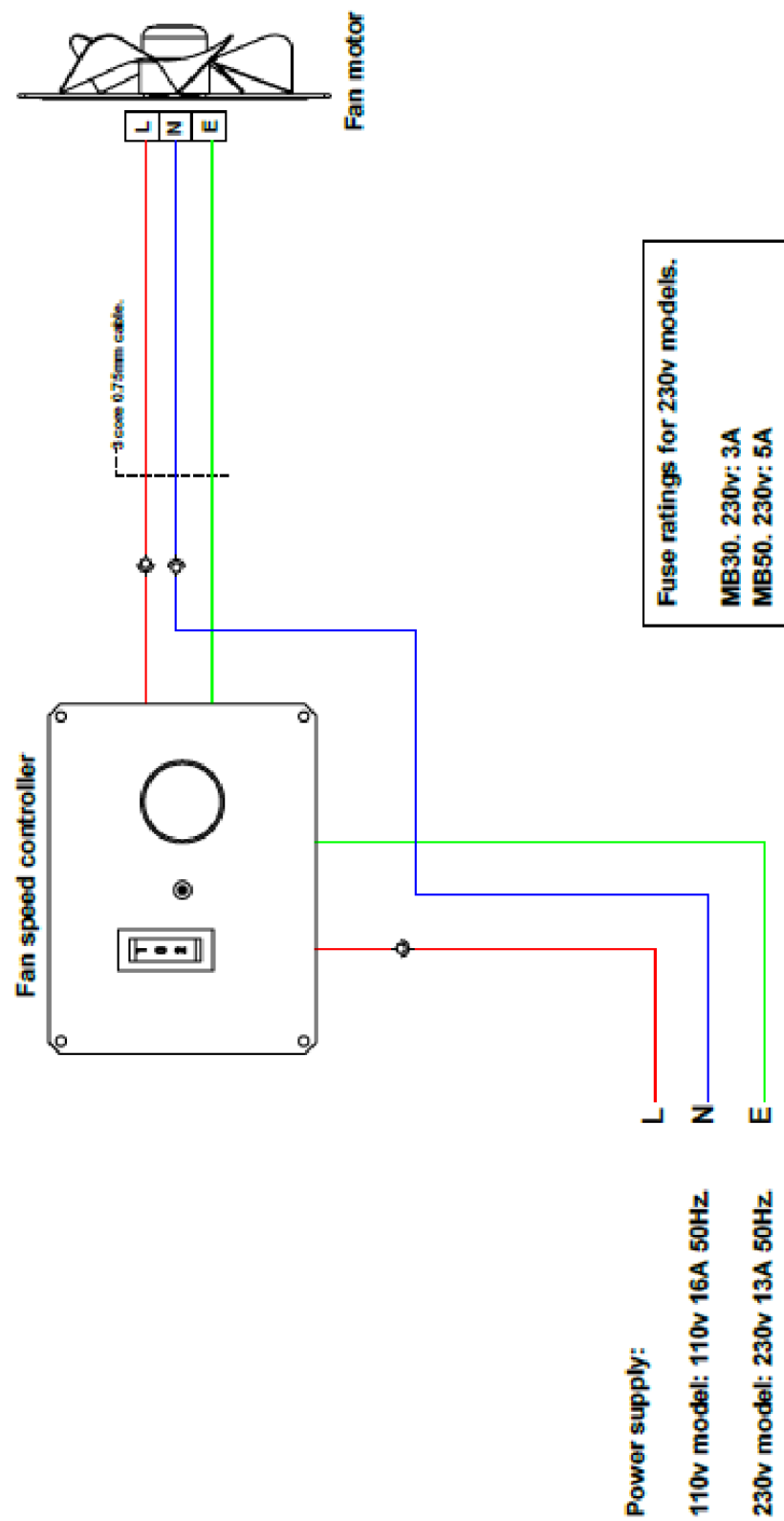
General maintenance should include:

- **Power lead. Check for signs of damage and replace if necessary.**
- **Air intake and outlet grills. Ensure grills are free from accumulated debris. Clear with compressed air if required.**
- **Fixings. Check all fixings are present and secure.**

Fault finding:

FAULT	POSSIBLE CAUSE	SOLUTION
No air output. Fan motor not running.	Fan not switched on.	Check all switches are on.
	Speed control incorrectly set.	Turn knob clockwise.
	Power supply fault.	Check power supply.
	Faulty switch.	Check switch and replace if necessary.
Poor airflow.	Grills clogged with debris.	Clean the intake and outlet grills.
	Low voltage at power supply.	Check power supply.
	Variable speed controller set too low.	Adjust speed control knob.

Wiring diagram. (All models).





Recycling



ENVIRONMENTAL PROTECTION: Please recycle any unwanted materials as opposed to disposing them as general waste. It is recommended the original is retained and used to store the product when not in use for prolonged periods of time. If this is not applicable ensure the materials are sorted and recycled in accordance with local regulations.



SPECIFICATION CHANGE: It is our policy to continually improve products to ensure these meet the rigours of the industry we serve. Therefore, as such we reserve the right to alter specifications, data, components & parts with-out prior notice.

WARRANTY: Please refer to the manufactures terms & conditions.

IMPORTANT: No liability will be accepted for the incorrect use of this product.

KEEP THIS BOOKLET FOR FUTURE REFERENCE

📞 Nottingham: 0115 946 1988 • London: 0208 830 3333 ✉ Nottingham: sales@hscgroupuk.co.uk • London: sean@hscgroupuk.co.uk 🌐 www.hscgroupuk.co.uk

The Hire Supply Company Terms & Conditions Apply At All Time E&OE